



Total Area: 85.5 m² ... 920 ft² (excluding terrace)  
All measurements are approximate and for display purposes only

Kitchen / Diner  
19'3" x 15'0"

Terrace  
5'10" x 15'5"

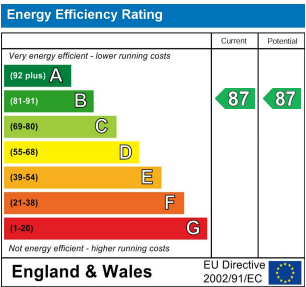
Bathroom

Ensuite

Bedroom  
12'9" x 12'5"

Bedroom  
17'0" x 8'0"

Utility



## FOREST ROAD, WALTHAMSTOW

£565,000 Leasehold  
2 Bed Apartment



### Features:

- Two Bedrooms
- 999 Year Lease
- Private Terraces
- Secure Video and Fob Entry
- Bike Store
- Views Across Open Green Spaces and Sensory Garden
- Integrated Appliances Included
- Ten Year Building Warranty and Two Year Customer Care Warranty
- Energy Efficient and Low Energy Bills
- IMAGES ARE OF SHOW SUITE

A striking new development just off Fellowship Square, this fully featured three bedroom ground floor apartment is home to high end fixtures, fittings and finishes throughout. And just a short stroll to The Village.

Energy efficient, with video and fob entry plus a 250 year lease and secure bike storage, as well as a ten year building warranty, your new home has been designed with peace of mind, in mind.

REQUEST A VIEWING  
0203 325 7227

E11, E7, E12 & E15  
hello11@stowbrothers.com  
0203 397 2222

E4 & N17  
hello4@stowbrothers.com  
0203 369 6444

E17 & E10  
hello17@stowbrothers.com  
0203 397 9797

E18 & IG8  
hello18@stowbrothers.com  
0203 369 1818

E8, E9, E5, N16, E3 & E2  
hellohackney@stowbrothers.com  
0208 520 3077

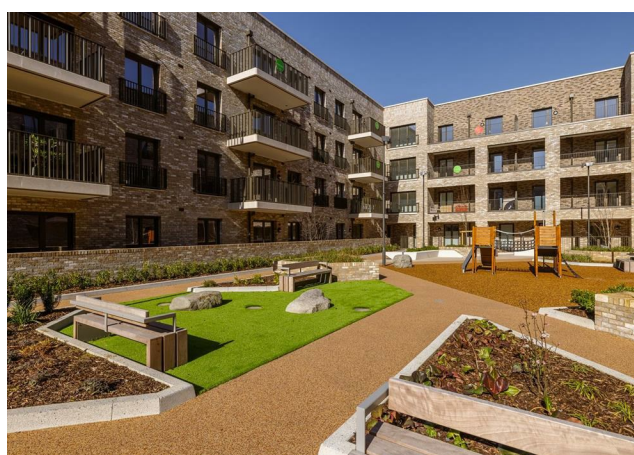
New Homes  
newhomes@stowbrothers.com  
0203 325 7227

Investment & Development  
id@stowbrothers.com  
0208 520 6220

Property Maintenance  
propertymanagement@stowbrothers.com  
0203 325 7228

STOWBROTHERS.COM  
@STOWBROTHERS





REQUEST A VIEWING  
0203 325 7227

#### IF YOU LIVED HERE...

Your hallway's immediately wide and welcoming, with the extra storage and incidental space that's all too often overlooked in London apartment living. Then your open plan lounge, kitchen and diner opens everything up even further. Immaculate white cabinets home to high end integrated appliances give way to Forest Green wood panelling while smoky grey engineered hardwood runs underfoot.

A set of patio doors open up from your living room to your terrace, a secluded outdoor spot with a lush green backdrop under clear skies. Great for a morning coffee. Elsewhere your main bedroom is a substantial double, with its own Juliette balcony access and a striking statement wall above the bed. Your second bedroom is similarly appointed, and finally your bathroom's a softly lit, boutique affair, with large format tiling from tub to ceiling.

Outside and Walthamstow's latest landmark, Fellowship Square, is

just moments away. An artfully arranged public space, with fountains and regular events, this is a lovely spot to have on your doorstep. Explore a little further for Bell Corner, home to some charming independent cafes and one of our best gastropubs, The Bell. Finally Lloyd Park's open green spaces and landscaped gardens are less than a half mile on foot.

#### WHAT ELSE?

- You're just a ten minute walk from The Village here, our celebrated leafy enclave home to some of the best bars, restaurants and gastropub for miles around.
- Walthamstow Central station is just a twenty minute stroll or five minute bike ride, for direct Victoria line and Overground connections to Oxford Circus and Liverpool Street, respectively.
- The multi million pound sporting facilities of the Waltham Forest Feel Good Centre are less than ten minutes away. Here you'll find an Olympic pool, state of the art gym, trampoline park, sports hall, climbing wall and much more.



#### A WORD FROM THE EXPERT...

"I love living in Walthamstow – it's got such a great mix of things going on. Saturdays are my favourite, with the market in Lloyd Park full of fresh food, handmade bits, and plenty of friendly faces. The new Soho Theatre has brought amazing shows right to our doorstep, and if I fancy a pint, the Blackhorse Beer Mile breweries are perfect for a wander. When I need some fresh air, the Walthamstow Wetlands are just a short stroll away – all that greenery makes you completely forget you're in London. Plus, with brilliant transport links, it's so easy to hop on the Tube or Overground and be in Central London in no time at all".

WILLIAM JACKSON  
E17 ASSISTANT BRANCH MANAGER

FOLLOW US ➔ @STOWBROTHERS  
STOWBROTHERS.COM